

# CANALINE

*Canal Boat Engines*



*Power behind the pleasure*

# CANALINE

## Why fit a Canaline Engine in your boat?

- ❖ The Canaline Engine range is primarily based upon the Kioti Diesel Engine range, for the small engines, with larger engine based on the Mitsubishi engine.
- ❖ These engines have some key features, which are compulsory for a canal boat engine, including a large flywheel, to ensure smooth engine running, indirect injection combustion system, to ensure no smoke in locks and are emission compliant to EPA Tier 4 / EU stage 3a, and of course, meet the RCD regulations.
- ❖ This engine range come with twin alternators, PRM gearbox, keel cooled suitable for ski tank cooling, engine control panel, along with all the normal features needed for a canal boat engine.
- ❖ The Canaline Engine has now been chosen by Black Prince Holidays and Anglowelsh as their marine engine for the future, after successful trials, and will replace the discontinued Isuzu engines.
- ❖ Our 3 year warranty and UK wide dealer network, will give you peace of mind when cruising.

## Who are Engines Plus?

Engines Plus Ltd, is a new company, with a growing reputation, and some familiar faces from the marine engine market. Engines Plus management team have been involved in the canal boat market for many years, and more recently ran the former Isuzu engine distributor, HMI, which was very successful within this market place.



Now running their own operation, they have worked hard in marinising this new range of engines from Kioti, with all the features and benefits you would expect from a canal boat engine.

Engines Plus Ltd have also secured further products which now include Sole Marine Diesel engines, PRM gearboxes, Isuzu Diesel Engines and Whisper Power Generators.

The Sole Diesel engine range allows Engine Plus to market their larger engines which are ideally suited to wide beam and dutch barge market.

## The Core Engines



The core engine of the Canaline 25, 30, 38, 42 and 52 is based upon the Korean built, Kioti Diesel Engine. Established in 1947, Kioti has become a market leader in the manufacture of diesel engines and agricultural machinery in Korea and has received global acceptance of the products manufactured. The acceptability of Kioti products has resulted in the company becoming firmly establishment in both the North American and European markets.

The state of the art engine manufacturing facility currently has the capacity to produce 40,000, multi-cylinder engines per year in the 20 - 60 horsepower range. From three cylinders to turbo charged four cylinder models, quality and dependability is built into each engine produced.



Kioti R & D and the Kioti Technical Center consistently strive to improve the quality and dependability of existing models.

All KIOTI engines are built in line with EPA, EC, CARB, ISO 9001 and ISO 14001 certifications

The Canaline 70 is based upon the well known Mitsubishi engine, and again is fully emission compliant, and is built in Japan.

## All Canaline marine engines come complete with

- ❖ Large flywheel for smooth engine running
- ❖ Keel cooled to suit skin tank cooling
- ❖ Emissions compliant to the RCD regulations
- ❖ Meets the BSS standards
- ❖ 12V starter motor and 50 Amp Alternator
- ❖ Dry exhaust flange 1½ BSP, 2” BSP on 70
- ❖ Engine mounted fuel filter, with water trap
- ❖ Morse type connections for engine and gearbox
- ❖ Additional Alternator, driven by large diameter pulley
- ❖ 200 hour oil change period
- ❖ Engine and gearbox operators’ handbook
- ❖ Sump drain pump with isolating tap, fitted to the engine
- ❖ Earth return engine wiring harness complete with a 4-metre extension loom
- ❖ Indirect injection diesel engine
- ❖ Water cooled exhaust manifold
- ❖ Calorifier connections
- ❖ PRM Marine gearbox, 2:1 ratio
- ❖ High-level oil filler and dipstick
- ❖ Engine bearers
- ❖ Electric fuel lift pump
- ❖ Low noise air cleaner kit
- ❖ Anti vibration mounts
- ❖ Engine control panel
- ❖ Electric Stop

## Intermediate Engine Control Panels

The intermediate panel comes standard on the 25, 30 and 38, comprises of a tachometer with digital hour recorder/voltmeter, key start and stop, with warning LED’s and audible alarms for high water temperature, low oil pressure and no charge from both starter and domestic alternator. The panel also features, an on LED, along with a timed pre-heat yellow LED for the glow plugs.

## Deluxe Engine Control Panel

The deluxe panel comes standard on the 42, 52 and 70 comprises of a tachometer with digital hour recorder/voltmeter, water temperature and oil pressure gauges, key start and stop, with warning LED’s and audible alarms for high water temperature, low oil pressure and no charge from both starter and domestic alternator. The panel also features, an on LED, along with a timed pre-heat yellow LED for the glow plugs.

# CANALINE 25

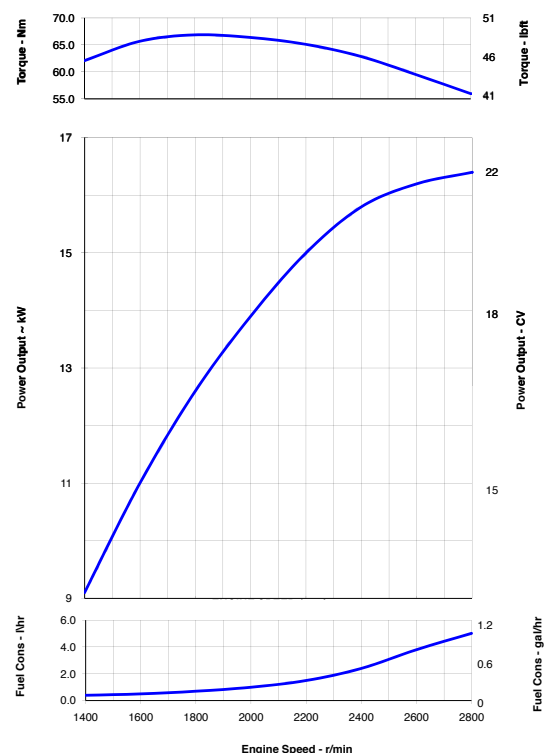
22 bhp @ 3000 r/min



- ❖ 3 cylinder  
Kioti Diesel Engine
- ❖ PRM 80  
Mechanical Gearbox
- ❖ Twin Alternators  
50A & 80A
- ❖ Intermediate Engine  
Control Panel

## Technical Data

General Characteristics	Canaline 25
No of Cylinders	3
Maximum output	22 bhp
Maximum r.p.m.	2800
Cubic Capacity	1.01
Bore x Stroke	75 x 76
Injection system	Indirect
Cooling system	Keel cooled
Twin alternators	50A/80A
Water inlet/outlet - inside diameter	32mm
Calorifier connection - Hose diameter	5/8"
Exhaust stub size	1½" BSP
Fuel feed hose - inside diameter	8mm
Leak off fuel hose - inside diameter	8mm
Engine overall length	717mm
Engine feet - width	572mm
Gearbox model (standard spec)	PRM 80
Type	Mechanical
Reduction ratio (pleasure only)	2.04:1 or 2.5:1



# CANALINE 30

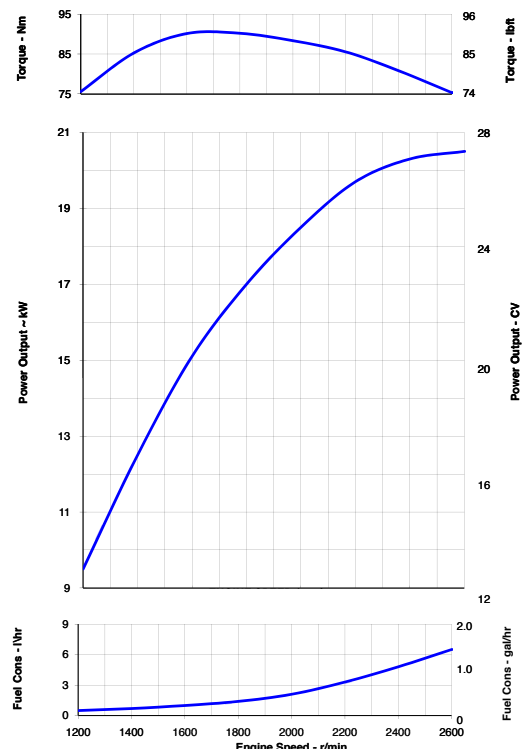
28bhp @ 2600 r/min



- ❖ 3 cylinder Kioti Diesel Engine
- ❖ PRM 80 Mechanical Gearbox
- ❖ Twin Alternators 50A & 80A
- ❖ Intermediate Engine Control Panel

## Technical Data

General Characteristics	Canaline 30
No of Cylinders	3
Maximum output	28 bhp
Maximum r.p.m.	2600
Cubic Capacity	1.39
Bore x Stroke	80 x 92.4
Injection system	Indirect
Cooling system	Keel cooled
Twin alternators	50A/80A
Water inlet/outlet - inside diameter	32mm
Calorifier connection - Hose diameter	5/8"
Exhaust stub size	1½" BSP
Fuel feed hose - inside diameter	8mm
Leak off fuel hose - inside diameter	8mm
Engine overall length	807mm
Engine feet - width	572mm
Gearbox model (standard spec)	PRM 80
Type	Mechanical
Reduction ratio (pleasure only)	2.04:1 or 2.5:1



# CANALINE 38

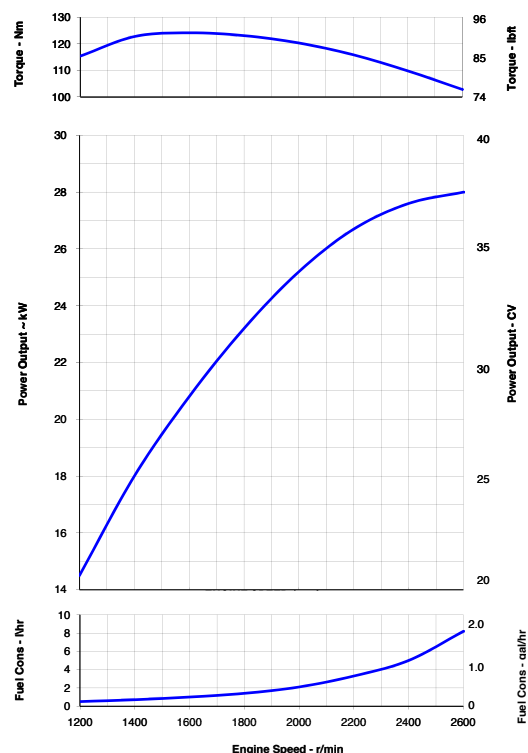
38 bhp @ 2600 r/min



- ❖ 4 cylinder Kioti Diesel Engine
- ❖ PRM 120 Mechanical Gearbox
- ❖ Twin Alternators 50A & 80A
- ❖ Intermediate Engine Control Panel

## Technical Data

General Characteristics	Canaline 38
No of Cylinders	4
Maximum output	38 bhp
Maximum r.p.m.	2600
Cubic Capacity	1.99
Bore x Stroke	83 x 92.4
Injection system	Indirect
Cooling system	Keel cooled
Twin alternators	50A/80A
Water inlet/outlet - inside diameter	32mm
Calorifier connection - Hose diameter	5/8"
Exhaust stub size	1½" BSP
Fuel feed hose - inside diameter	8mm
Leak off fuel hose - inside diameter	8mm
Engine overall length	905mm
Engine feet - width	572mm
Gearbox model (standard spec)	PRM 120
Type	Mechanical
Reduction ratio (pleasure only)	2.04:1 or 2.94:1



# CANALINE 42

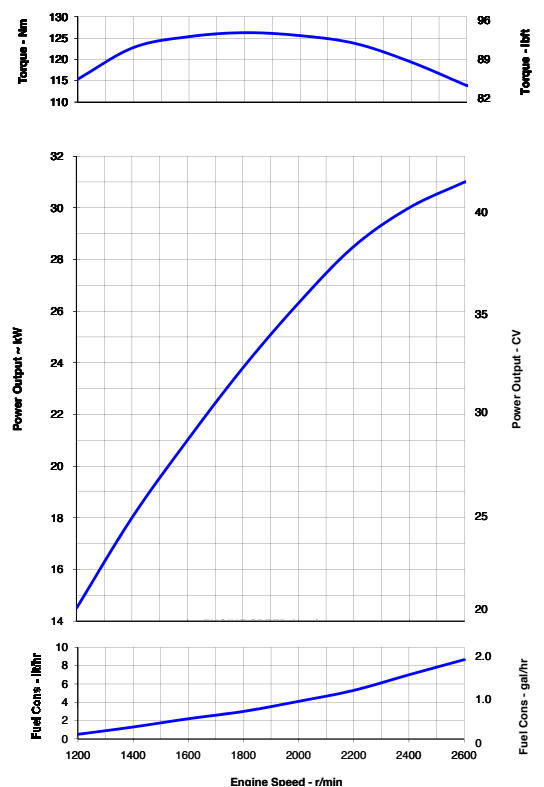
42 bhp @ 3000 r/min



- ❖ 4 cylinder Kioti Diesel Engine
- ❖ PRM 150 Hydraulic Gearbox
- ❖ Twin Alternators 50A & 110A
- ❖ Deluxe Engine Control Panel

## Technical Data

General Characteristics	Canaline 42
No of Cylinders	4
Maximum output	42 bhp
Maximum r.p.m.	2600
Cubic Capacity	1.99
Bore x Stroke	83 x 92.4
Injection system	Indirect
Cooling system	Keel cooled
Twin alternators	50A/110A
Water inlet/outlet - inside diameter	32mm
Calorifier connection - Hose diameter	5/8"
Exhaust stub size	1½" BSP
Fuel feed hose - inside diameter	8mm
Leak off fuel hose - inside diameter	8mm
Engine overall length	905mm
Engine feet - width	572mm
Gearbox model (standard spec)	PRM 150
Type	Hydraulic
Reduction ratio (pleasure only)	2.09:1 or 2.82:1



# CANALINE 52

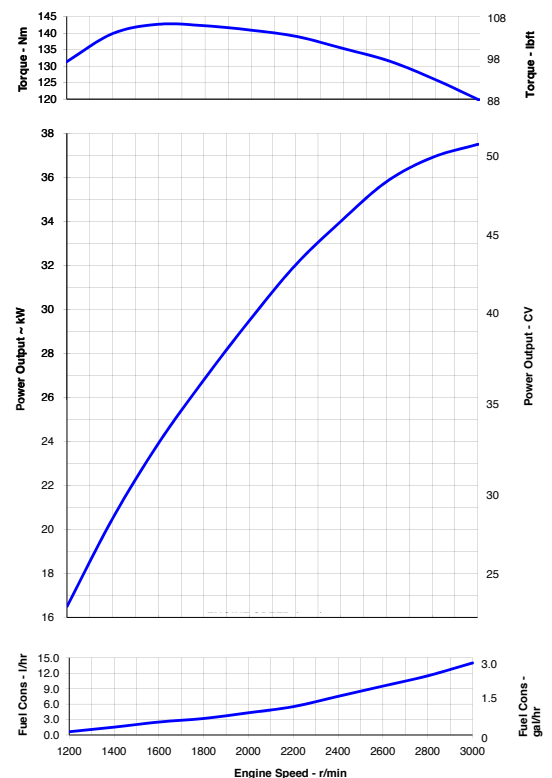
52 bhp @ 3000 r/min



- ❖ 4 cylinder Kioti Diesel Engine
- ❖ PRM 150 Hydraulic Gearbox
- ❖ Twin Alternators 50A & 110A
- ❖ Deluxe Engine Control Panel

## Technical Data

General Characteristics	Canaline 52
No of Cylinders	4
Maximum output	52 bhp
Maximum r.p.m.	3000
Cubic Capacity	2.19
Bore x Stroke	87 x 92.4
Injection system	Indirect
Cooling system	Keel cooled
Twin alternators	50A/110A
Water inlet/outlet - inside diameter	32mm
Calorifier connection - Hose diameter	5/8"
Exhaust stub size	1½" BSP
Fuel feed hose - inside diameter	8mm
Leak off fuel hose - inside diameter	8mm
Engine overall length	905mm
Engine feet - width	572mm
Gearbox model (standard spec)	PRM 150
Type	Hydraulic
Reduction ratio (pleasure only)	2.09:1 or 2.82:1



# CANALINE 70

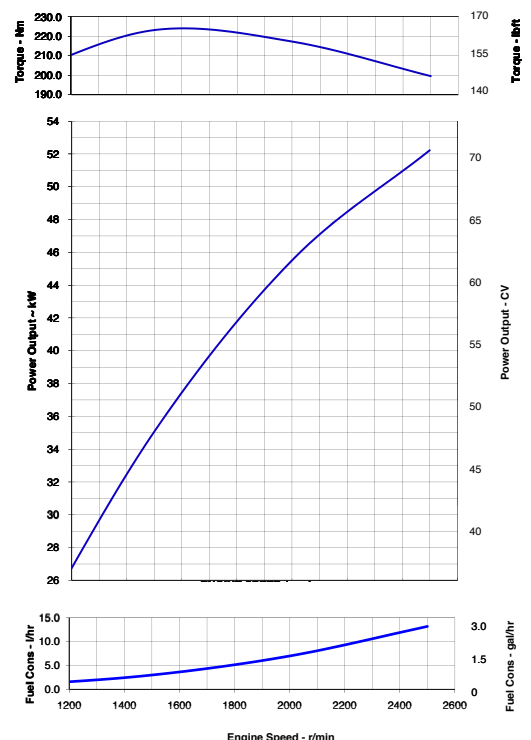
65 bhp @ 2500 r/min



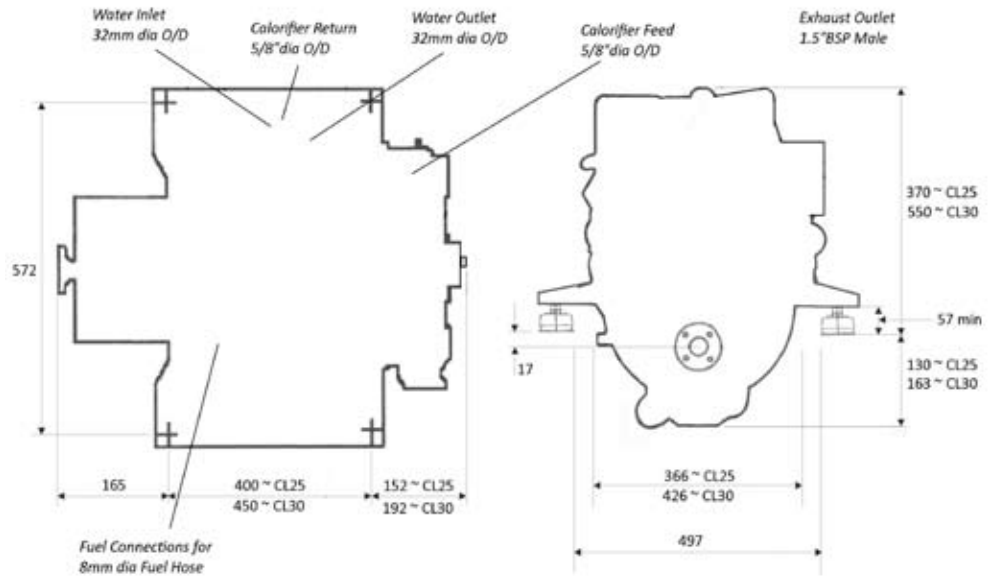
- ❖ 4 cylinder Mitsubishi Diesel Engine
- ❖ PRM 260 Hydraulic Gearbox
- ❖ Twin Alternators 110A & 110A
- ❖ Deluxe Engine Control Panel

## Technical Data

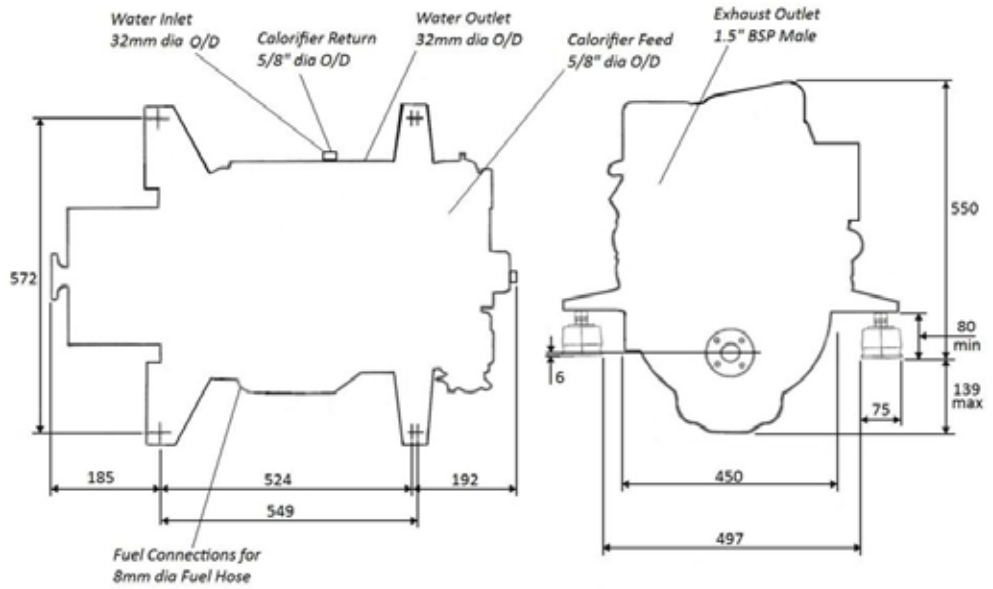
General Characteristics	Canaline 70
No of Cylinders	4
Maximum output	65 bhp
Maximum r.p.m.	2500
Cubic Capacity	3.33
Bore x Stroke	94 x 120
Injection system	Indirect
Cooling system	Keel cooled
Twin alternators	110A/110A
Water inlet/outlet - inside diameter	32mm
Calorifier connection - Hose diameter	5/8"
Exhaust stub size	2" BSP
Fuel feed hose - inside diameter	8mm
Leak off fuel hose - inside diameter	None
Engine overall length	1102mm
Engine feet - width	600mm
Gearbox model (standard spec)	PRM 260
Type	Hydraulic
Reduction ratio (pleasure only)	1.96:1 or 2.94:1



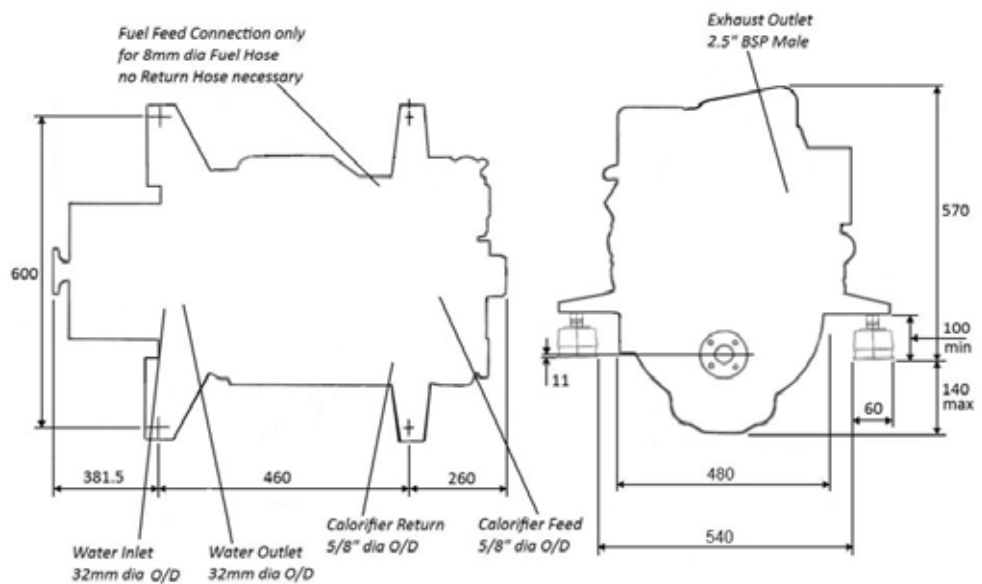
## CANALINE 25, 30



## CANALINE 38, 42, 52



## CANALINE 70



## Optional Accessories

We have a full complement of optional accessories, to suit your Canaline Marine engine, which will ensure your engine package meets your needs, whether it is a Travel Power kit or an upgrade on your gearbox, we will engineer the package to suit. Our options include:-

- ❖ Upgraded gearbox to your choice
- ❖ 3.5 or 5.0 kva Travel Power kits
- ❖ Python Drive or Centaflex couplings, flexible drive system
- ❖ Larger output alternators, 175A/12V or 110A/24V
- ❖ Deluxe Panel
- ❖ Silencer, inc Hospital type
- ❖ Full installation kits



## Product Support

Engines Plus Ltd, have set up a UK wide dealer network to support the Canaline series of marine engines. This unrivalled dealer network, is strategically placed to ensure we have service point at all the main locations on the UK Canal Network, to cover your engine for parts and service.

All products will be covered by our 3-year warranty, and you always have the Engines Plus team on hand if you need the extra level of care and attention.

## Why Canaline?

- ❖ Large flywheel for smooth engine running
- ❖ Emission compliant and indirect injection for no smoke in locks
- ❖ Twin Alternators as standard
- ❖ UK wide dealer and after care support network
- ❖ 3 year warranty



## Contact Details



Engines Plus Ltd Unit 11 Taits Hill Industrial Estate Dursley Gloucestershire GL11 6BL

Tel: 01453 547273 Fax: 01453 547002 e-mail: [sales@enginesplus.co.uk](mailto:sales@enginesplus.co.uk)

Web: [www.enginesplus.co.uk](http://www.enginesplus.co.uk)