

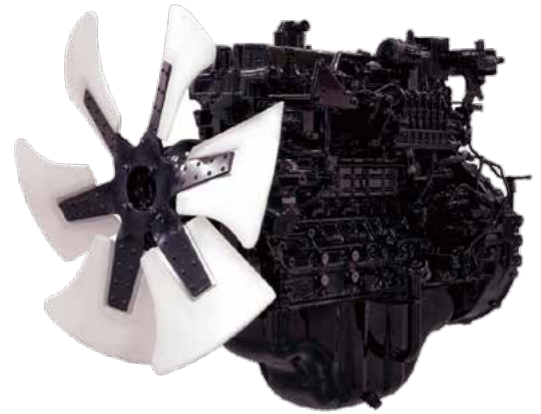
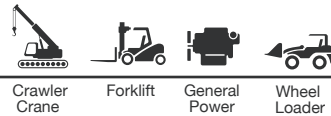
Tier 2

A 6HK1T engine achieves power, environmental performance, and economy

6HK1T

- Environmental performance that meets Tier 2 regulations
- Powerful 136 kW output
- Environmentally friendly and economical with low fuel consumption
- Lightweight and compact, with outstanding quiet performance
- Highly rated around the world for reliability and durability

► Suitable for a wide range of applications

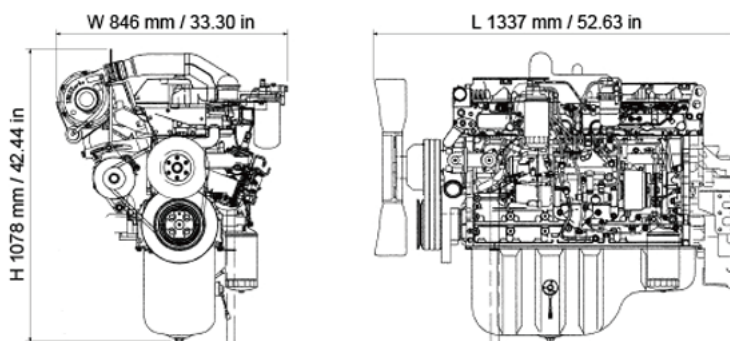


* Image shown may not reflect actual engine configuration.

Engine data for general power specifications

Specifications			
Engine Model	6HK1T		
Engine Characteristics	4-Cycle, Water-Cooled, Vertical In-Line		
Valvetrain Configuration	Over Head Camshaft		
Type of Aspiration	Turbocharged		
Type of Injection	Direct		
No. of Cylinders	6		
Bore x Stroke	115 x 125 mm	4.52 x 4.92 in	
Displacement	7.790 liters	475 cu.in	
Overall Dimensions	Length	1337 mm	52.63 in
	Width	846 mm	33.3 in
	Height	1078 mm	42.44 in
Dry Weight	650 kg	1433 lb	
Rated Output	136 / 2000 kW/min ⁻¹	182 / 2000 HP/rpm	
Max. Torque	735 / 1600 N·m/min ⁻¹	542 / 1600 lb·ft/rpm	

* The data on this data sheet are for information purposes only and are not binding values.

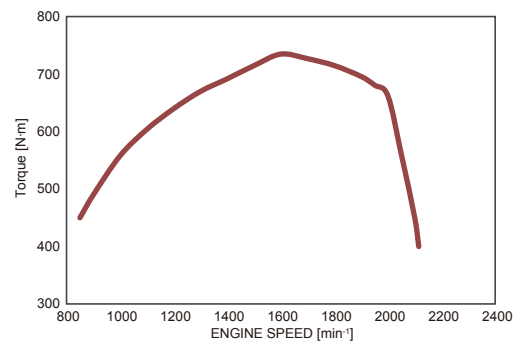


* Appearance diagrams shown may not reflect actual engine configuration.

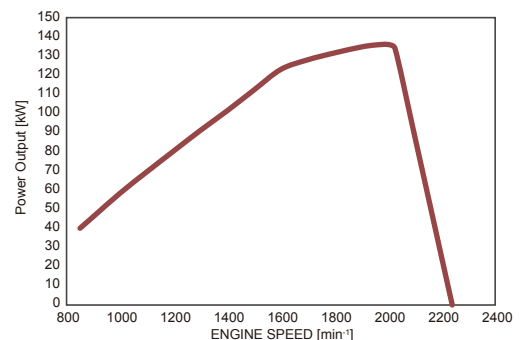
* Final dimensions are dependent on selected options.

Performance Curve

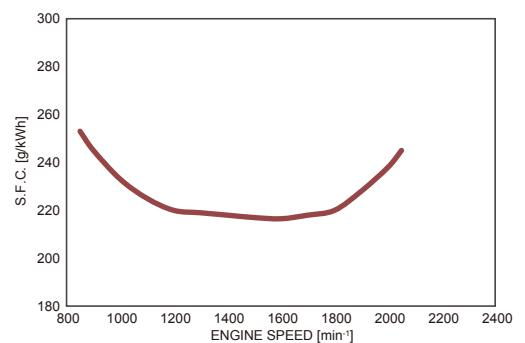
Torque



Power Output



Fuel Consumption



* Performance curves shown are representative.



Engines Plus Ltd

Unit F The Aquarius Centre, Edison Close, Waterwells Business Park, Quedgeley, Glos, GL2 2FN
Tel: + 44 1452 729707. E-mail: sales@enginesplus.co.uk