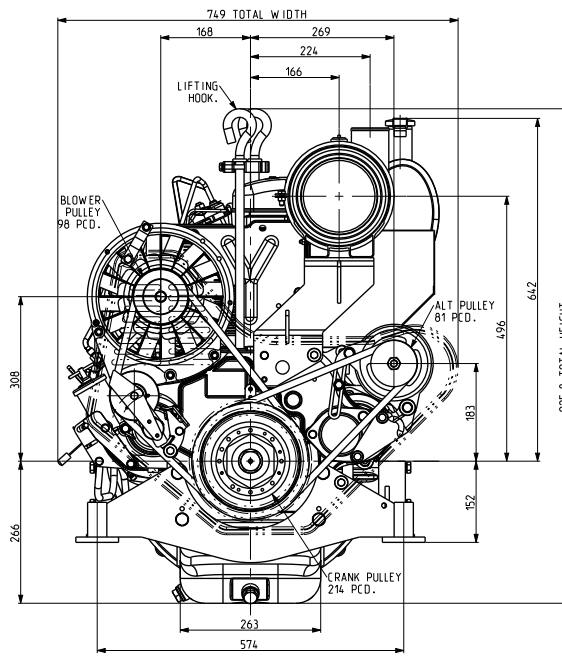
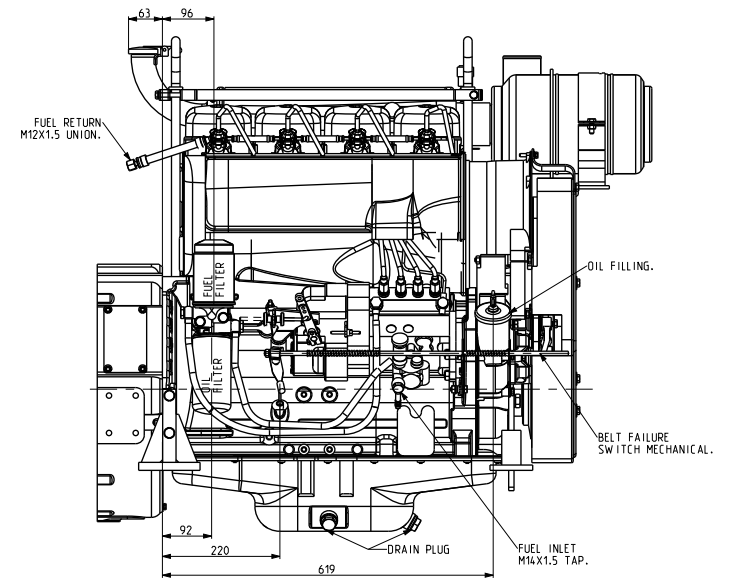


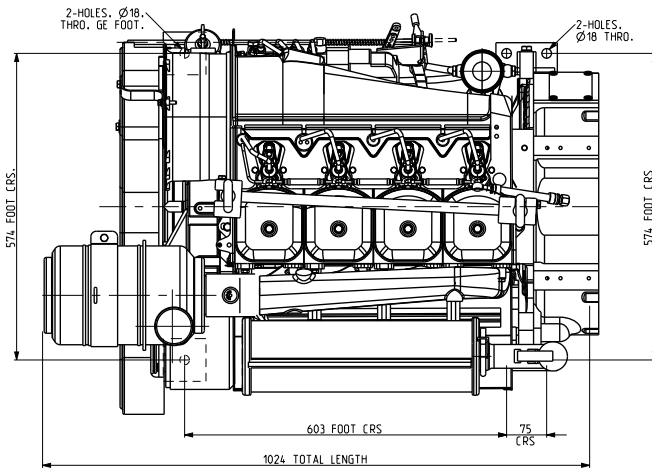
VIEW FROM STARTER END.



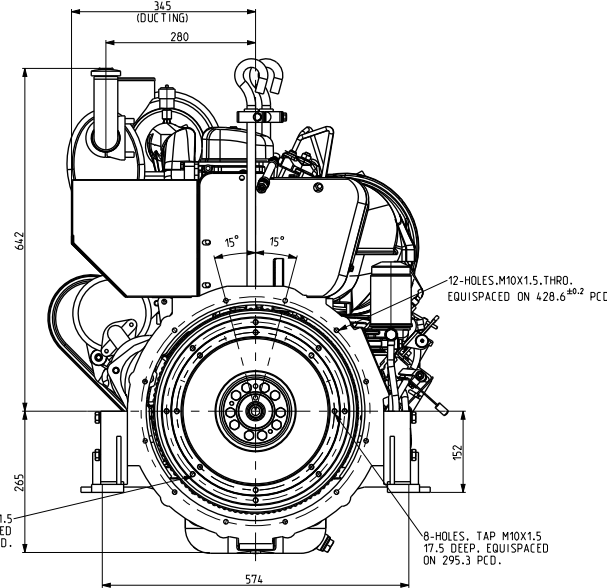
VIEW FROM GEAR END.



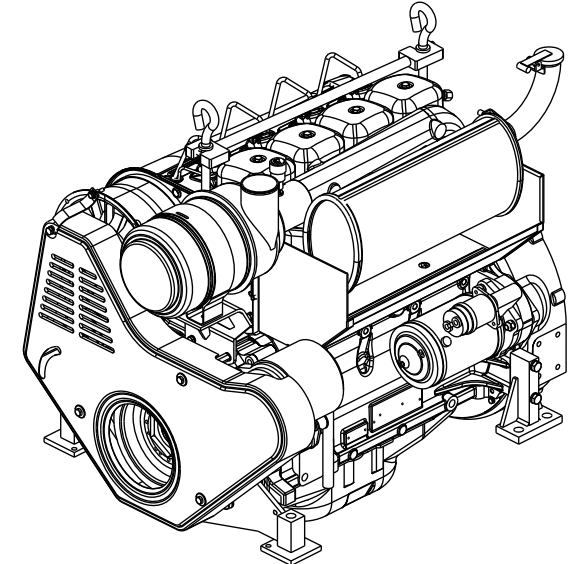
VIEW FROM FLYWHEEL END.



VIEW FROM TOP END.



VIEW FROM FLYWHEEL END.



FOR REFERENCE.

IF IN DOUBT ASK

PRINTS OF PREVIOUS REVISION NO. SHOULD BE SCRAPPED

THIS DRAWING IS PROPERTY OF KIRLOSKAR OIL ENGINES LTD. AND MUST BE RETURNED ON REQUEST. IT IS SUBMITTED AS CONFIDENTIAL INFORMATION WITH OUR ENGINEERS' TENDERS. ORDER OF CONTRACTING NO. IT IS NOT TO BE ISSUED FOR ANY OTHER PURPOSE OR ORDER NOR MAY BE COPIED OR LENT WITHOUT OUR AUTHORITY IN WRITING.

FORMAT No. RBE-FORM/056/01 (REFER DOP No. RBE 6.4/03)

UNLESS OTHERWISE SPECIFIED		CAD DRG. FILE:- PLM		LIFECYCLE STATE:- RELEASED	
● ALL DIMENSIONS ARE IN MM.		MATERIAL :-		CASTING/FORGING DRG. NO. :-	
● SURFACE ROUGHNESS AS PER CO. STD. AND ISO9001.		HEAT TREATMENT :-		WEIGHT (KG) :-	
● UNMENTIONED TOLERANCES AS PER CO. STD. AND ISO9001.		DRN: (MAYURMODEL/CAM)		TYPE: HA496	
● REMOVE ALL SHARP BURRS AND SHARP EDGES.		CHD: <i>[Signature]</i>		SCALE: 1:5	
● DRAWING NOT TO BE SCALED.		APPD: <i>[Signature]</i>		SHT. NO: 1 OF 1	
UNMENTIONED		DATE: 12/08/2017		DRAWING NO.:	
RADII :-		KIRLOSKAR OIL ENGINES LTD..		REV. NO.:	
CHAMFER :-		PUNE 411 003 (INDIA)		04.1272.00.00	
UNDERCUT :-				00	